

/ Descriptions

JF ; \$() * =C

/ Features

*%M **' M

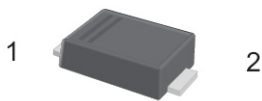
/ Applications

(N %

/ Equivalent Circuit

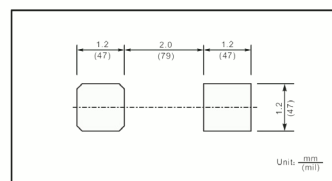


/ Pinning



PIN	DESCRIPTION
1	Cathode
2	Anode

The recommended mounting pad size



/ Marking

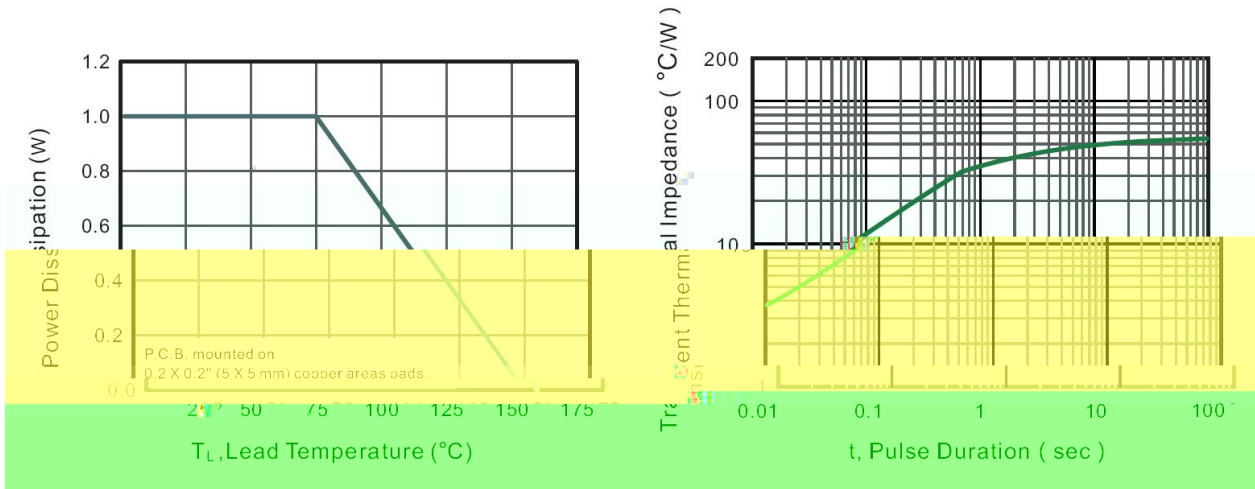
MM1W3V3~ MM1W330

/ Electrical Characteristics(Ta=25)

/ Electrical Characteristics(Ta=25)

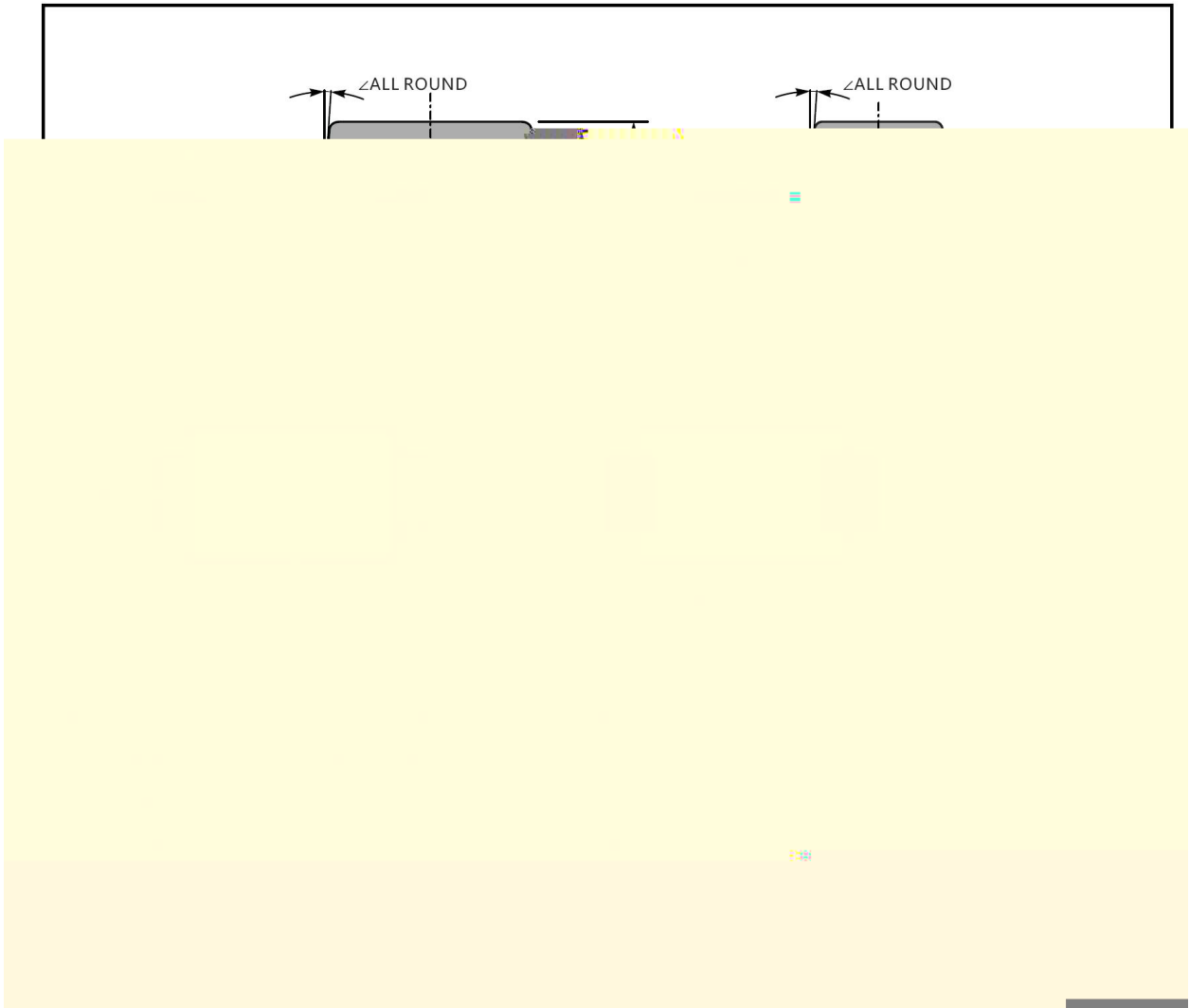
				()				
				()		()		
					Ω	(μ)	()	

/ Electrical Characteristic Curve

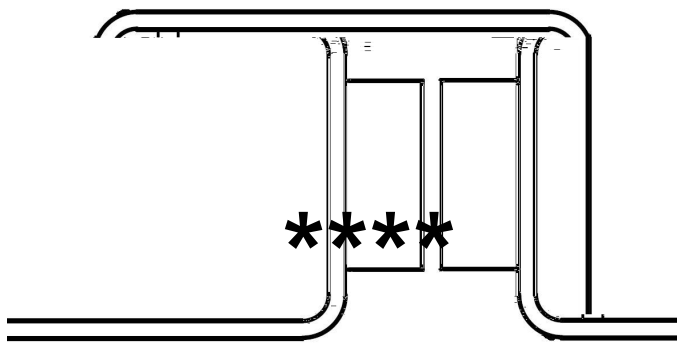


/ Package Dimensions

SOD-123FL



/ Marking Instructions



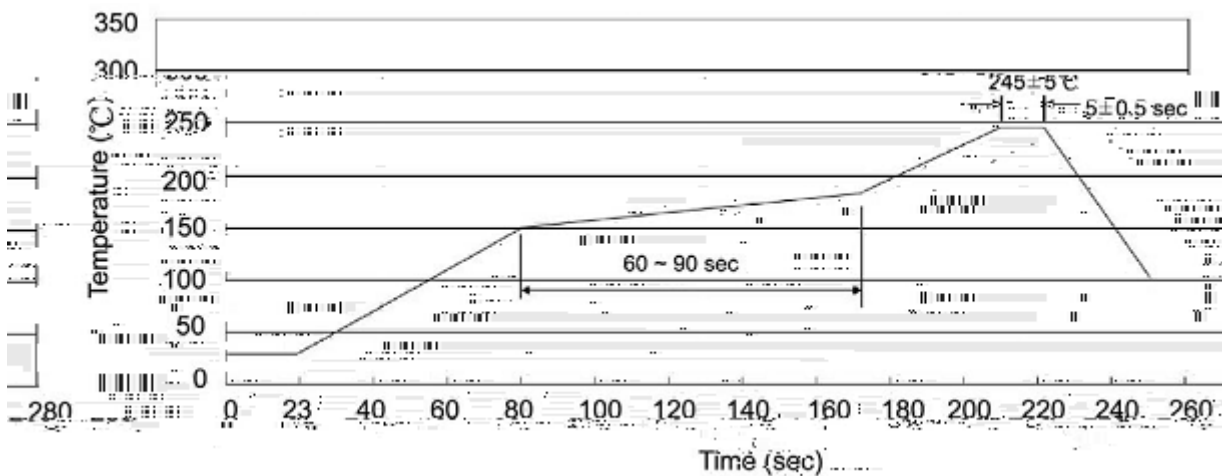
=? F

(

*

=? F

() /



/ Resistance to Soldering Heat Test Conditions

/ Packaging SPEC.

--	--	--	--	--	--	--	--	--